



WILKINSBURG STAMP CLUB NEWS

Wilkinsburg Stamp Club P.O. Box 10552 Pittsburgh, PA 15235-0552
http://www.wilkinsburgstampclub.com

Volume 18 Issue 10
April 2019

Member of The American Philatelic Society #12293

Easter Postcards



Philately - is the study of stamps and postal history and other related items.

It also refers to collecting, research, and enjoyment, of stamps and other philatelic products.



Austria WWI



Old EASTER Postal Cards

From the Bible, Christians believe that on the third day after his crucifixion, Jesus arose from the dead.

The name Easter may have come from the word Eostre, a Teutonic goddess of spring Symbols;

The lamb. A symbol of Jesus, A traditional Easter food are butter or cakes in the shape of a lamb. The symbol of the lamb comes from the Jewish paschal lamb for the Jewish Passover Christians interpreted the lamb as a forecast of Christ's sacrifices on the cross, as they spoke of Jesus

as the Lamb of God. Some cultures traditionally serve hot cross buns.

Lights Candles and bonfires in some countries mark Easter celebrations. On Easter Eve they make a new light called a Paschal or Easter Candle Eggs represent a new life (spring) that returns to nature about Easter. The custom of exchanging eggs goes back to the Egyptians and Persians often dyed their eggs in the prime colors. And gave them to friends. The believe that the Earth hatched from a giant egg. Early Christians of Mesopotamia were the first to use colored eggs

to represent the resurrection
Rabbits

The legend they think started in Germany says a poor woman dyed some eggs during a famine and hid them in a nest as an Easter gift for her children. Just as the children discovered the nest a large rabbit leaped away The story spread that the rabbit brought the eggs.

Ancient Egyptians believed that the rabbit symbolized birth and new life. Some ancients believed it as a symbol of the moon.

As in later times it may have become an Easter symbol because the moon determined Easter's date. Because it fell on the first Sunday after the full moon after March 21st. It cannot come before March 22 or after April 25th Determined by the First Nicene Council on 325 A.D.

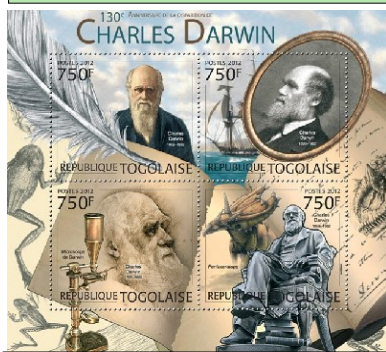
Story and postcards contributed by Bill Breirton

Thank you Bill!

Inside this issue:

Club News	2
Showing Your Collection with Pride	2
Stamp Shows	3
WILKPEX 2019	3
Showing Your Collection with Pride continued	3
Meeting Times/Dates	3
Save the Date!!!	
Junior Corner – Cachets	4
Officers / Contact Info	4
50 Years Ago	4

Notable People on Stamps:

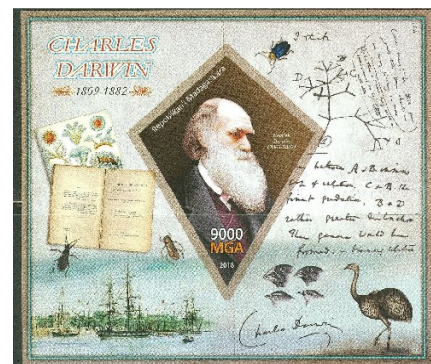


Darwin S/Sheet Togo 2012

English naturalist who was the grandson of Erasmus Darwin and father of physicist George Darwin. Darwin did poorly in school, and so could not secure employment following his graduation from divinity school. However, he was able to secure a position as

ship's naturalist aboard the H. M.S. Beagle. The Beagle undertook a five year cruise around the world, beginning December 27, 1831 and ending October 2, 1836. During the course of the voyage, Darwin noticed how species changed along the coast of South America, and especially on the Galapagos Islands. Upon returning to Eng-

land, he published his observations in A Naturalist's Voyage on the Beagle (1839). Darwin, reflecting on his observation, developed a theory of evolution.



Madagascar 2018

Club News

Contact Information;

Please update your email address so we can notify you quickly with any urgent matters.

Sometime within the next three months **John Hotchner** is going to feature our club's WILKPEX 2019 souvenir sheet in his regular "U. S. STAMP NOTES" column in LINN'S. **ALSO** he will feature the three versions of our 1961 souvenir sheet now that we have confirmed that they exist, and he now agrees with us.

In the meantime, club members **Gene Bujdos** and **Mike Moticha** (our man in Apple Valley, CA) are in the process of buying as many 1961 sheets WITHIN REASON for a raffle of these sheets for club members ONLY at our regular meeting after the WILKPEX 2019 SHOW in June. You do not have to be at this

meeting and there is no fee to enter. All you have to do is let any club officer know that you want your name to be deposited into the jar to be eligible to buy one of these sheets at a reasonable price, which will be determined before the drawing of names.
...Gene Bujdos

Once again reminder to get your exhibits started for the show, two sizes of frames available. Let us know if you want one or more of the small frames so we can get them out for you,... Must know by the end of April...Forms for exhibiting will be available at the meetings...or online at http://www.wilkinsburgstampclub.com/pdf/Exhibit_form_2019.pdf or from the link on the Show page

Get your flea market items ready and make sure you have your forms filled out prior to the show. Forms available at the meetings

IT'S ELECTION TIME

That time again for election of officers,... Nominations for President and Treasurer will be accepted until the end of April,... please let us know if you are interested in either position. Andy and Danielle, have been nominated to retain the offices they now hold.

NEW AND EXCITING

We are offering help with stamp identification at the July meeting, ... This will be done quarterly if we have a good turnout. Many foreign stamps are difficult to identify, so bring them in to the July meeting and get help finding out from whence they came. Can't make it to the meeting scan and send photo in an email or send photo regular mail to Andy.

Danielle will be ordering magnetic Name badges for those interested in having those. If you would like one of the magnetic

type of Name tags, contact Danielle
E-mail dmm742000@yahoo.com
Phone (412) 727-1096 ASAP to let her know so she can get them ordered in time for the show.

It was voted on and approved to put the show ad in Linn's Magazine.

The post office has approved the cachet featuring Youngwood's Hall of Fame recipient George Blanda. Envelope design is in progress.

Summer picnic is a go as Andy was able to secure the grove for the 21st of July. If you are interested in attending let us know.

Showing Your Collection with Pride

By Michael Baadke

If you've been collecting stamps for a while, you probably know that it can be fun to show your collection to another stamp collector or to family or friends who express an interest in your hobby. Every stamp collector who loves pulling out his collection and talking about his stamps should seriously consider becoming an exhibitor.

Exhibiting a collection is the highest form of show-and-tell for someone who enjoys the stamp hobby. Developing an exhibit can help you become a more disciplined and informed collector. Now, don't run away from the idea just because you think you can't put together an exhibit unless you own the greatest stamp rarities in the world. That line of thinking is totally wrong. Exhibiting is something that anyone can do, from the novice to the most advanced collector. Let's look at what exhibits are all about.

The philatelic exhibit is a display created from a collection of stamps or covers (mailed envelopes, postcards and so on), or a

combination of these and similar items, such as postmarks or meter stamps. Exhibits are shown publicly at stamp shows all around the world, from the smallest local club gathering to the most prestigious international competitions. Many exhibitions are competitive; that is, the exhibits at the show are judged. Usually the exhibits receive awards or medals at various levels, and one exhibit may be selected as the best overall for that show.

For a collector just having some fun with his collection or who wants to create an exhibit just to show family and friends, the exhibit can be anything at all that he wants it to be. In many ways, the exhibit is similar to the pages of a stamp album, except that you decide how things should be ordered. The stamps and covers in an exhibit are arranged on pages, usually 8½ inches by 11 inches or thereabouts, but the exhibitor includes on the pages written explanations and descriptions of the items being shown.

The exhibit should tell a story, like you might tell a friend about your collection if he was sitting in a

chair next to you. What is the significance of the stamps and covers you collect? Do they represent the activities of a specific country's postal service in a certain time or place? Can you help the person who looks at your collection learn something more about your collecting area? It is a good idea to select a specific topic to address with your exhibit. Consider where your collection is the strongest, and try building your exhibit on that.

Obviously you can choose a large topic or a small one. The size of your exhibit can be large or small as well. Most competition exhibits are 16 pages or more, with some covering as many as 200 pages. Many stamp shows display exhibits in 16-page frames, so a four-frame exhibit presents 64 pages. Before you start building your exhibit, consider going to a stamp show to look at how other collectors put their exhibits together. You may find that the presentations that you see will give you some great ideas about how you would like to handle displaying your own favorite

stamp topic.

Most exhibits begin with a title page that acts as an introduction and lets the viewer know why the exhibit was created. The title page should tell specifically what is being exhibited and provide an outline of the exhibit. It can also point out the most significant items in the exhibit. That way, the person looking at the display can start out with a good idea of what he will see and how it will be presented.

After your exhibit is outlined in the title page, the rest of the exhibit should present your collected material in a logical sequence that both informs the viewer and holds his interest.

Does it sound like a lot of planning has to go into the exhibit? It often takes exhibitors a long time to decide exactly how to arrange each page. Collectors prepare preliminary pages, make notes and outlines, consider how the exhibit will flow from one page to the next, and so on.

The exhibitor uses materials similar to those found in high-quality

(Continued on page 3)

Upcoming Stamp, Shows

Spring Stamp Expo

April 6, 2019

Cumberland Valley
Philatelic
Society

Location: Eugene Clarke Center
235 S. Third Street,
Chambersburg, Pennsylvania
17201

Contact: Richard Sprankle,
rspran32@gmail.com
Phone: 717-263-4457

LANCOPEX

April 26th & 27th 2019
Philatelic Society of Lancaster
County

Location: Farm & Home Center,
1383 Arcadia Rd., Lancaster,
Pennsylvania 17601

Contact: Lou DiFelice
loudifelice@gmail.com
Phone: 717-572-3419

Website: <http://www.lcps-stamps.org>

TUSCOPEX Stamp Show

Apr 27th, 2019

Location: Tuscora Park
161 Tuscora Ave NW
New Philadelphia,
OH 44663

Contact: Jim Shamel
Phone: 740-922-4610

BUTLERPEX

May 10th & 11th

Butler County Philatelic Society
Location: Tanglewood Senior
Center, 10 Austin Ave., Lyndora,
Pennsylvania 16045

Contact: Tom Sivak,
tomsstamps@zoominternet.net
Phone: 724-287-1931

Website: <http://www.butlercountyphilatelicsociety.com>

WILKPEX 2019

WILKPEX 2019

May 31st, June 1st, 2019

This is a Friday and Saturday!

It will still once again held at Gateway Hall in Monroeville. Times for the show will be 10-5 on Friday and 10-5 on Saturday. Set up will be Thursday evening.

Time to start preparing your exhibits, Contact **Andy Novotny** novoand@hotmail.com or at a meeting, as soon as possible with the number of frames you will need and the title of your exhibit... There are smaller frames available for those new to exhibiting or those with content that require less pages. Let us know if you want one or more of the small frames so we can get them out for you... **Must know by the end of April...**

Forms for exhibiting will be available at the meetings...

It has been decided we will go with George Frederick Blanda for the cachet and cancel.

The souvenir sheet will be a spoof on the "Turning the tide" stamp which paid tribute to the sacrifice of American soldiers and millions of supporters on the home front when the United States helped turn the tide of war in favor of the Allies



Showing Your Collection with Pride- continued

(Continued from page 2)

stamp albums: acid-free papers and safe philatelic mounts, all of which are available from stamp-hobby supply dealers.

The information on each exhibit page can be neatly hand-lettered, typed, or computer-printed. Every page of the exhibit should show philatelic items, such as stamps or covers, postmarks and the like. The best exhibits include original research and have a concise narrative.

Whether you decide to create an exhibition just for your own pleasure or if you plan to be declared the APS Champion of Champions some day, there is no doubt that as you create your exhibit you will learn more about the subject you've chosen to collect. Every stamp exhibitor has to start somewhere, and the sooner you start, the more time you'll have to develop the skills to become a champion.

There are many great resources to help the prospective exhibitor, and among these is membership in the American Association of Philatelic Exhibitors. Members receive a quarterly journal filled with very helpful suggestions from many exhibitors who share

their experiences.

Edited, full article can be found at <https://www.linns.com/news/postal-updates-page/stamp-collecting-basics/2000/november/show-your-collecting-pride-with-an-exhibit.html>



Save the Date!

Sunday July 21st
Summer Club Picnic

We are trying this instead of the club luncheon...

Come and bring the family!

Reservations Have been finalized for the grove at the Monroeville Community park west for Sunday July 21st... Bring a covered dish, check with Deb so we have a nice variety of foods,... fun and games...

Thanks to; **Laura** for doing the leg work on this one, and **Andy** for finalizing the reservations.

Watch for further updates
Grove has grill and electricity, horse shoes, walking trail, playground, and ball field available.



Meetings

ALL Visitors are welcome!

We meet the 2nd & 4th Sundays

No Holidays

Next meetings

April 14th, 2019

April 28th, 2019

Summers Meetings

June thru August

2nd Sundays only

Doors Open 12:30

Meeting starts at 2PM

Churchill Borough Building,
2300 William Penn Hwy
Churchill, PA 15235.

Free light lunch available

DUES ARE ONLY \$8.00 PER FISCAL YEAR (JULY-JUNE)

Members, can send check to:
Wilksburg Stamp Club
and sent to:

Wilksburg Stamp Club
P.O. Box 10552

Pittsburgh, PA 15235-0552

Junior Corner

This month we will talk about Cachets.

In philately, a cachet (pronounced ka-shay') is a printed or stamped design or inscription, other than a cancellation or pre-printed postage, on an envelope, postcard, or postal card to commemorate a postal, or other philatelic event. There are official and private cachets. They commemorate everything from the first flight on a particular route, to the Super Bowl. Cachets are also frequently made, either by private companies or a government, for first day of issue stamp events or "second-day" stamp events. They are often present on event covers. is a design on an envelope, usually on the left side. Cachets are most commonly found on first day covers and typically are illustrations and or text relating to the subject of the stamp or event being commemorated.

Wilkesburg Stamp club presents a new cachet at the annual stamp show WILKPEX with cancellations for either date of the show.



Cachet from the 2018
WILKPEX

Newsletter

It's your newsletter!

Help Make it special

Original articles for the newsletter may be submitted by any of the membership to Deb Foltyn at a meeting or emailed to Quest4moos@msn.com

Regular mail:
Deb Foltyn
1023 Brintell Street
Pittsburgh, PA 15201-1637

Ideas or content suggestions are welcome.

Note articles submitted may be edited for content or to fit the Format.*

Club members get a free black and white hard copy of the newsletter.

Officers**President:**

Andy Novotny
novoand@hotmail.com

Vice-President:

Laura Kaczynski
laurakac13@verizon.net

Treasurer /Secretary**& Mailing Coordinator:**

Danielle Weaver
dmm742000@yahoo.com

Newsletter Editor**& Web Tech:**

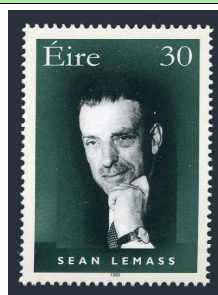
Deb Foltyn
quest4moos@msn.com

WE'RE ON THE WEB!
Wilkesburgstampclub.com

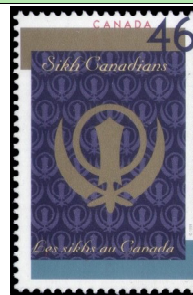
WILKESBURG STAMP CLUB
Home of the Famous Satirical Souvenir

50 Years ago - April 1969

Australia Queen Mother &
Queen Elizabeth II



Ireland Sean Lemass



Sikh Canadians



33¢ Daffy Duck
U.S. #3306

This issue celebrates the Queen's 73rd birthday, the photograph was taken outside Sandringham Church, England in 1992, this stamp marks the first time the Queen Mother & Queen Elizabeth II have appeared together on an Australian stamp, it was released in a sheetlet of 10. Also available in presentation pack.

Postage Stamps Scott #1747

On 29 April 1999 the Irish Post issued a stamp commemorating the centenary of birth of Sean Francis Lemass. He was born on 15 July 1899. Sean Lemass was Taoiseach (leader) of Ireland from 1959 to 1966. He is regarded by many historians as the greatest of all political leaders of Ireland and is credited with laying the foundations of the modern economic success in Ireland. He was captured and interned in 1922.

In April 1969, in Hull, Quebec, a special gathering was held to celebrate Baisakhi and the place of Sikh Canadians in the nation's culture. The intricate symbol featured prominently on the stamp is called the "Khanda". It takes its name from the double-edged sword at its centre, which represents divine knowledge: the sharp blade of the Khanda cleaves truth from falsehood. Encircling the sword is the "Chakra". Symbolizing God, it is a ring-a shape without beginning or end.

Issue Date: April 16, 1999
City: Los Angeles, CA
Since his debut performance in the short animated film "Porky's Duck Hunt," Daffy Duck has appeared in more than 120 cartoons, often co-starring with Porky Pig and Bugs Bunny. It wasn't until later that the character's eccentric behavior would earn him the name "Daffy" Duck.